

1950s

EDEN AVA
C O U T U R E

Vintage

Inspired Slip



for 18" dolls

skill level is easy

1950S VINTAGE INSPIRED SLIP

TO WHERE UNDER FULL SKIRTS AND DRESSES

Every girl needs a slip to make her dress full and twirly. This easy tutorial requires no pattern pieces and can be modified to be shorter or longer.

Make one in coordinating colors of your dress for a flirty peek-a-boo effect!



ALL DOLLS ARE NOT CREATED EQUAL

DOLL MEASUREMENTS & SIZING

EDEN AVA COUTURE patterns are drafted to fit Mattel® American Girl Dolls. Pre-Mattel® dolls (and even some early Mattel® dolls) have a chunkier torso and their biceps are larger as well. Depending on the doll you're sewing for, adjustments may need to be made to the pattern. Often, just adding a bit to the seam allowance helps, but it is a very good idea to measure your doll before you beginning.

The photo illustration shows the difference in measurements.



BEFORE YOU BEGIN

SOME PREP WORK.....

All seams are 1/4" unless otherwise noted.

Cut all fabric on the grain unless otherwise noted.

SUPPLIES NEEDED

& FABRIC SUGGESTIONS

1/4 yard cotton
Lingerie Elastic
Thread

PATTERN PIECES

& LAYOUT

There are no pattern pieces for this tutorial. All pieces are cut from fabric in the following dimensions:

Slip Body 15" x 4 1/2"

Slip Ruffle Piece A 30" x 2 1/2"

Slip Ruffle Piece B 30" x 3 1/2"

Elastic 9" in length

SEWING INSTRUCTIONS

1950s SLIP

1. Finish top edge of Slip Body with zig zag stitch or serger. Cut a piece of elastic 9" in length. Stretch elastic and pin to top edge of the right side of fabric.



2. As you sew, stretch, the elastic.



3. Fold over elastic to wrong side and topstitch, stretching elastic as you sew.



4. Press top edge.



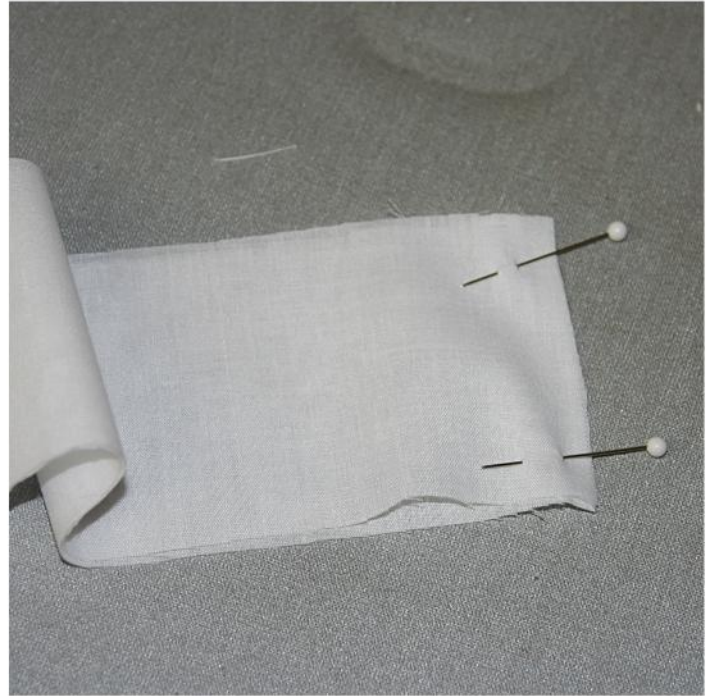
5. With right sides together, pin and sew down the side.



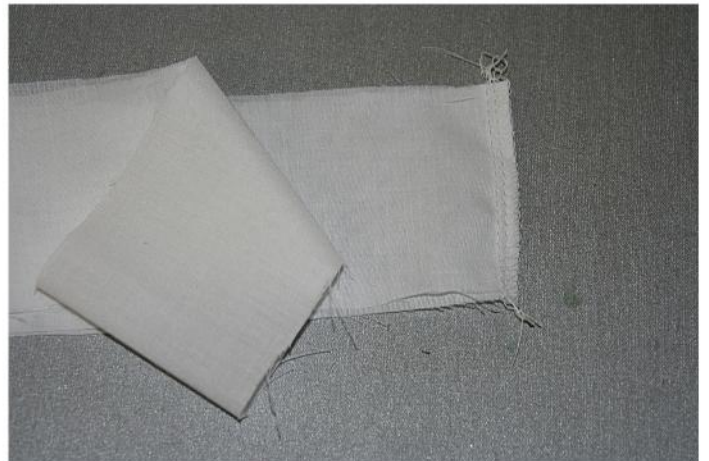
6. Finish seam allowance with zig zag stitch or serger.



7. With right sides together, pin and stitch Ruffle Piece A at short end.



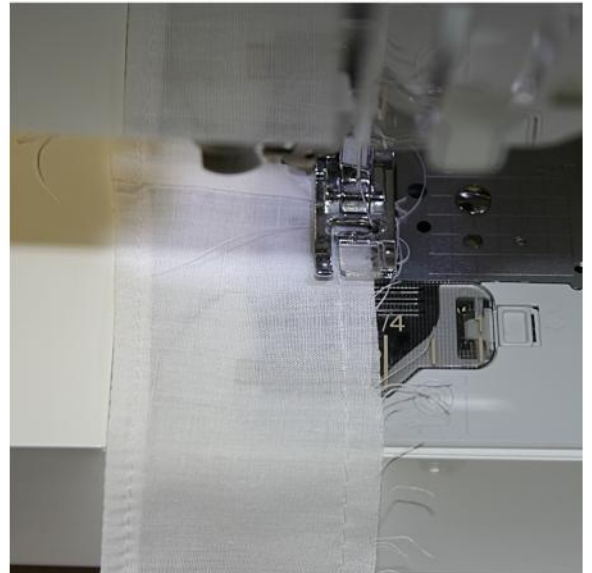
8. Finish seam allowance with zig zag stitch or serger.



9. Finish the hem edge of each ruffle piece with zig zag stitch or serger. Fold up hem edge, press & stitch.



10. Sew two rows of basting stitches along top edge of ruffle.



11. With right sides together, pin to slip body. Pull bobbin threads to gather. Adjust gathers. Sew in place.



12. Repeat steps 7 thru 11 for Ruffle Piece B. Finish edges with zig zag stitch or serger



13. Press seam allowance towards slip body. Turn right side out.



©2013 EDEN AVA COUTURE All rights reserved.

This pattern cannot be duplicated, shared, redistributed, resold or posted in any form.